

2025

June Newsletter

For Gateway Credit Union members



About **Gateway Credit Union**

At **GCU**, we are committed to supporting our local communities in **Torfaen** and **Monmouthshire** in building financial resilience through secure savings and affordable loans. By starting your savings journey with GCU, you can secure a stable financial future for yourself and your loved ones. Our savings options are designed for individuals of all ages.



LATEST NEWS

GCU - Mobile App makes your life easy

The Gateway Credit Union Mobile App puts all your GCU membership services right at your fingertips! If you are already using the GCU Mobile App, you know just how easy it is to transfer from your GCU Savings to your bank or apply for a loan with us. Our App simplifies everything for you.

If you have not tried the GCU Mobile App yet, we invite you to download it on your smartphone, whether you have an Android or an Apple device. The GCU Mobile App allows you access to all our services.

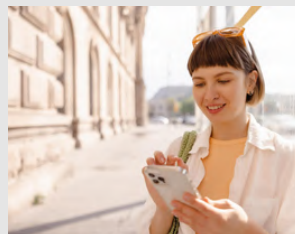
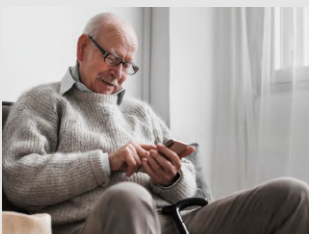
If you haven't signed up for the App yet, just scan the QR code on the right to get started. Give it a try, you will love the convenience!



info@gatewaycu.co.uk



www.gatewaycu.co.uk



Benevolent Scheme and Life Insurance

In 2020 we notified members that our Life Savings Insurance was to be replaced with a Benevolent Scheme to benefit more members. The benefits of membership are that any outstanding loan balance at time of passing is covered by free insurance. Loans taken out with Gateway before your 70th birthday are still covered by our free Life Insurance, ensuring that any outstanding debt is not passed on to a member's estate. The Benevolent Scheme increases the amount left to your named beneficiary by £25, £50 or £75 per full year of membership. This is to a maximum additional sum of either: £1500 or your average highest balance in the last three years, whichever is the lower amount. Please check on our website if you are interested in finding out more.



Are Your Contact Details Up-to Date?

Most members are now using our GCU App & online services. We like to keep in regular contact with all our members and to do so want to make sure we have your current mobile phone number and e-mail address. To update these, or for any other change of details, please let us know by downloading the GCU App, visiting us online, or e-mailing info@gatewaycu.co.uk

Ready for Summer? Have any plans?

Are you making any plans, booking holidays for the Summer, and need some money for your travels?

As a member of Gateway Credit Union, you can apply now for a GCU loan £500 to £10,000*

*Terms and conditions apply.

All loan applications are individually assessed by qualified and experienced GCU loan assessors to check affordability. Gateway Credit Union will never knowingly over-indebt any member.



info@gatewaycu.co.uk



www.gatewaycu.co.uk

